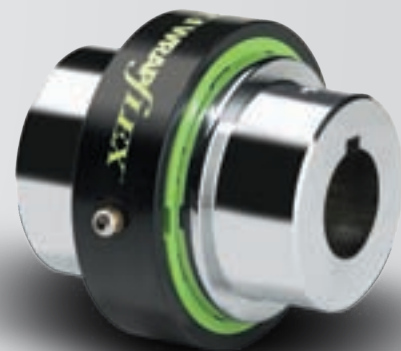




Wrapflex Couplings

Part number guide sheets



Part Number Sheet Wrapflex Couplings

R-10: Nylon Cover with standard element.

Coupling Size	Complete Coupling				Components			Replacement Cover Fasteners (2 per Assy)	Cover Fasteners (Button Head)
	Both Hubs RSB	R Hub RSB	R Hub Rebore ***	R Hub Modify (Long)	Nylon Cover & Element Assembly*	Flex Element w/ Fasteners	Nylon Cover **		
2 ^	3701861	3302297	3701833	N/A	3701853	N/A	N/A	2927918	M3x8mm
3 ^	3701862	3302298	3701834	N/A	3701854	N/A	N/A	297918	M3x8mm
4 ^	3701863	3302299	3701835	N/A	3701855	N/A	N/A	2927924	M4x8mm
5 ^	0789024	0359831	0789000	0789364	3701475	0789006	0360571	2919837	M4x8mm
10 ^	0789025	0359832	0789001	0789365	3701476	0789007	0360572	2919838	M4x10mm
20 ^	0789026	0359833	0789002	0789366	3701477	0789008	0360573	2919842	M6x16mm
30	0789027	0359834	0789003	0789367	3701478	0789009	0436990	2919842	M6x16mm
40	0789028	0359835	0789004	0789368	3701479	0789010	0436991	2921012	M8x20mm
50	0789029	0359836	0789005	0789369	3701480	0789011	0436992	2921014	M8x25mm
60	N/A	3301259	3700217	3700229	N/A	3700220	N/A	2921227	M10x25mm
70	N/A	3301260	3700218	3700230	N/A	3700221	N/A	2921227	M10x25mm
80	N/A	3301261	3700219	3700231	N/A	3700222	N/A	2921227	M10x25mm

Order Editor Notes:

- Unless otherwise specified, 2R thru 50R are furnished for clearance fit with 2 "metric" setscrews
- 60R thru 80R hubs are furnished for interference fit with one setscrew as standard

Additional Notes:

- * Bill of materials consists of:
 - Flexible element with 2 cover fasteners
 - Nylon cover
- ** Part numbers represent Nylon cover no flex elements.
- ^ Hub materials, high strength sintered steel , size 2R to 20R.
- *** "R" Hub re-bore part number is reference only, requires additional digits for specific non-stock bores.

Standard Bore Wrapflex "R10" Couplings

INCH BORE (Clearance Fit) Sintered Steel (PM) HUBS

HUB SIZE		2R	3R	4R	5R	10R	20R
Rough Bore		3302297	3302298	3302299	0359831	0359832	0359833
Hub Rebore		3701833	3701834	3701835	0789000	0789001	0789002
BORE	KEYWAY						GREY BOX Exceeds minimum bore capacity
0.3125	1/16 x 1/32	3302501					
0.3750	3/32 x 3/64	3302502	3302505				
0.5000	1/8 x 1/16	3302503	3302506	3302510			
0.6250	3/16 x 3/32	3701869	3302507	3302511	0789330		
0.7500	3/16 x 3/32	3302504	3302508	3302512	0789331	0789337	
0.8750	3/16 x 3/32	3701870	3701871	3302359	0789332	0789338	
0.9375	1/4 x 1/8						
1.0000	1/4 x 1/8		3302509	3302513	0789333	0789339	3700199
1.1250	1/4 x 1/8		3701872	3701873	0789334	0789340	3700186
1.2500	1/4 x 1/8			3701880	0789335	0789341	3700187
1.3750	5/16 x 5/32			3701874	0789336	0789342	0789345
1.4375	3/8 x 3/16				3702009	3702011	0794347
1.5000	3/8 x 3/16				3702010	0789343	0789346
1.6250	3/8 x 3/16				3100442	0789344	0789347
1.7500	3/8 x 3/16					0794086	0789348
1.8750	1/2 x 1/4					3100443	0789452
1.9375	1/2 x 1/4						3700200
2.0000	1/2 x 1/4						0789349
2.1250	1/2 x 1/4						0789350
2.2500	1/2 x 1/4						0794087
2.3750	5/8 x 5/16						3100444
2.4375	5/8 x 5/16						
2.5000	5/8 x 5/16						
2.6250	5/8 x 5/16						
2.7500	5/8 x 5/16						
2.8750	3/4 x 3/8						
2.9375	3/4 x 3/8						
3.0000	3/4 x 3/8						
3.1250	3/4 x 3/8						
3.2500	3/4 x 3/8						
3.3750	7/8 x 7/16						
3.5000	7/8 x 7/16						
3.6250	7/8 x 7/16						
3.7500	7/8 x 7/16						
3.8750	1 x 1/2						
3.9375	1 x 1/2						
4.0000	1 x 1/2						
4.1250	1 x 1/2						
5.2500	1 1/4 x 5/8						

GREY BOX Exceeds hub maximum bore size
(Note: For over max. bore condition, consult with coupling engineering 1-800-767-3539)

NOTE: CHECK MAINFRAME SYSTEM FOR CURRENT STOCK (IF ANY) OF THE FINISH BORED HUB P/N'S.

Order Editor Notes: Size 2R thru 50R hubs bored for clearance fit as standard and are furnished with 2 setscrews, 1 - over keyway and other 90°. Metric setscrews are standard per drawing 437454, FIG #3. Setscrews are included with bored hubs.

Part Number Sheet Wrapflex Couplings

R-10E: Coated steel cover with standard element.

Coupling Size	Complete Coupling				Components				
	Both Hubs RSB	R Hub RSB	R Hub Rebore***	R Hub Modify (Long)	Steel Cover & Element Assembly*	Flex Element w/ Fasteners	Coated Steel Cover **	Replacement Cover Fasteners (2 per Assy)	Cover Fasteners (Button Head)
2 ^	3701865	3302297	3701833	N/A	3701857	N/A	N/A	2927918	M3x8mm
3 ^	3701866	3302298	3701834	N/A	3701858	N/A	N/A	2927918	M3x8mm
4 ^	3701867	3302299	3701835	N/A	3701859	N/A	N/A	2927924	M4x8mm
5 ^	0789036	0359831	0789000	0789364	3701481	0789006	0359845	2919837	M4x8mm
10 ^	0789037	0359832	0789001	0789365	3701482	0789007	0359846	2919838	M4x10mm
20 ^	0789038	0359833	0789002	0789366	3701483	0789008	0359847	2919842	M6x16mm
30	0789039	0359834	0789003	0789367	3701484	0789009	0359848	2919842	M6x16mm
40	0789040	0359835	0789004	0789368	3701485	0789010	0359849	2921012	M8x20mm
50	0789041	0359836	0789005	0789369	3701486	0789011	0359850	2921014	M8x25mm
60	3700223	3301259	3700217	3700229	3701487	3700220	3301262	2921227	M10x25mm
70	3700224	3301260	3700218	3700230	3701488	3700221	3301263	2921227	M10x25mm
80	3700225	3301261	3700219	3700231	3701489	3700222	3301264	2921227	M10x25mm

Order Editor Notes:

- Unless otherwise specified, 2R thru 50R are furnished for clearance fit with 2 "metric"
- 60R thru 80R hubs are furnished for interference fit with one setscrew as standard

Additional Notes:

- * Bill of materials consists of:
 - Flexible element with 2 cover fasteners
 - Steel cover with complete marking and/or labels
- ** Part numbers represent steel cover.
- ^ Hub material, high strength sintered steel size 2R to 20R.
- *** "R" Hub re-bore part number is reference only, requires additional digits for specific non-stock bores.

Standard Bore Wrapflex "R10" Couplings

INCH BORE (Clearance Fit) Steel HUBS

HUB SIZE	2R	3R	4R	5R	10R	20R	30R	40R	50R	60R	70R	80R
Rough Bore	3302312	3302313	3302314	3302415	3302416	3302417	0359834	0359835	0359836	3301259	3301260	3301261
Hub Rebore	3701837	3701838	3701839	3701917	3701918	3701919	0789003	0789004	0789005	3700217	3700218	3700219
BORE	KEYWAY											
0.5000	1/8 x 1/16											
0.6250	3/16 x 3/32											
0.7500	3/16 x 3/32											
0.8750	3/16 x 3/32											
0.9375	1/4 x 1/8											
1.0000	1/4 x 1/8											
1.1250	1/4 x 1/8											
1.2500	1/4 x 1/8											
1.3750	5/16 x 5/32											
1.4375	3/8 x 3/16											
1.5000	3/8 x 3/16											
1.6250	3/8 x 3/16											
1.7500	3/8 x 3/16											
1.8750	1/2 x 1/4											
1.9375	1/2 x 1/4											
2.0000	1/2 x 1/4											
2.1250	1/2 x 1/4											
2.2500	1/2 x 1/4											
2.3750	5/8 x 5/16											
2.4375	5/8 x 5/16											
2.5000	5/8 x 5/16											
2.6250	5/8 x 5/16											
2.7500	5/8 x 5/16											
2.8750	3/4 x 3/8											
2.9375	3/4 x 3/8											
3.0000	3/4 x 3/8											
3.1250	3/4 x 3/8											
3.2500	3/4 x 3/8											
3.3750	7/8 x 7/16											
3.4375	7/8 x 7/16											
3.6250	7/8 x 7/16											
3.7500	7/8 x 7/16											
3.8750	1 x 1/2											
3.9375	1 x 1/2											
4.0000	1 x 1/2											
4.1250	1 x 1/2											
5.2500	1-1/4 x 5/8											
6.1250	1-1/2 x 3/4											
7.2500	1 3/4 x 7/8											

Bore Tol.
+0.0010
-0.0000

Bore Tol.
+0.0010
-0.0015

GREY BOX Exceeds minimum bore capacity

GREY BOX Exceeds hub maximum bore size
(Note: For over max, bore condition, consult with coupling engineering 1-800-767-3539)

NOTE: CHECK MAINFRAME SYSTEM FOR CURRENT STOCK (IF ANY) OF THE FINISH BORED HUB P/N's. Size 2R thru 50R hubs bored for clearance fit as standard and are furnished with 2 setscrews, 1 - over keyway and other 90°. Metric setscrews are standard per drawing 437454, FIG #3. Setscrews are included with bored hubs.

Why Choose Rexnord?

When it comes to providing highly engineered products that improve productivity and efficiency for industrial applications worldwide, Rexnord is the most reliable in the industry. Commitment to customer satisfaction and superior value extend across every business function.

Delivering Lowest Total Cost of Ownership

The highest quality products are designed to help prevent equipment downtime and increase productivity and dependable operation.

Valuable Expertise

An extensive product offering is accompanied by global sales specialists, customer service and maintenance support teams, available anytime.

Solutions to Enhance Ease of Doing Business

Commitment to operational excellence ensures the right products at the right place at the right time.

Rexnord Corporation

Rexnord is a growth-oriented, multi-platform industrial company with leading market shares and highly trusted brands that serve a diverse array of global end markets.

Process and Motion Control

The Rexnord Process and Motion Control platform designs, manufactures, markets and services specified, highly engineered mechanical components used within complex systems where our customers' reliability requirements and the cost of failure or downtime are extremely high.

Water Management

The Rexnord Water Management platform designs, procures, manufactures and markets products that provide and enhance water quality, safety, flow control and conservation.

REXNORD

Rex®

FALK

Link-Belt®

marbett®

MCC

BERG

highfield

Stearns®